



# Cleaning and caring

for oiled wood floors



[proffwoodcare.ch](http://proffwoodcare.ch)

## Oiled wood flooring

Oiled wood flooring is on trend. Its natural appearance, texture and matt-satin finish enhance any room and ensure it feels pleasant and warm underfoot. And the benefits don't stop there. Oiled surfaces also have practical advantages in terms of durability, resistance to dirt, breathability and ease of cleaning and care. This is high-quality living.

# Keep your floor looking beautiful

## Care for it properly

Conventional floor cleaners and care products can damage wood. Avoid this by using original PROFF Woodcare products for your wood floor. To maintain your floor, we recommend regular re-oiling in line with the level of use. These simple steps will help you to preserve the natural beauty of your wood floor for many years to come.

## Avoid wood damage from microfibre cloths

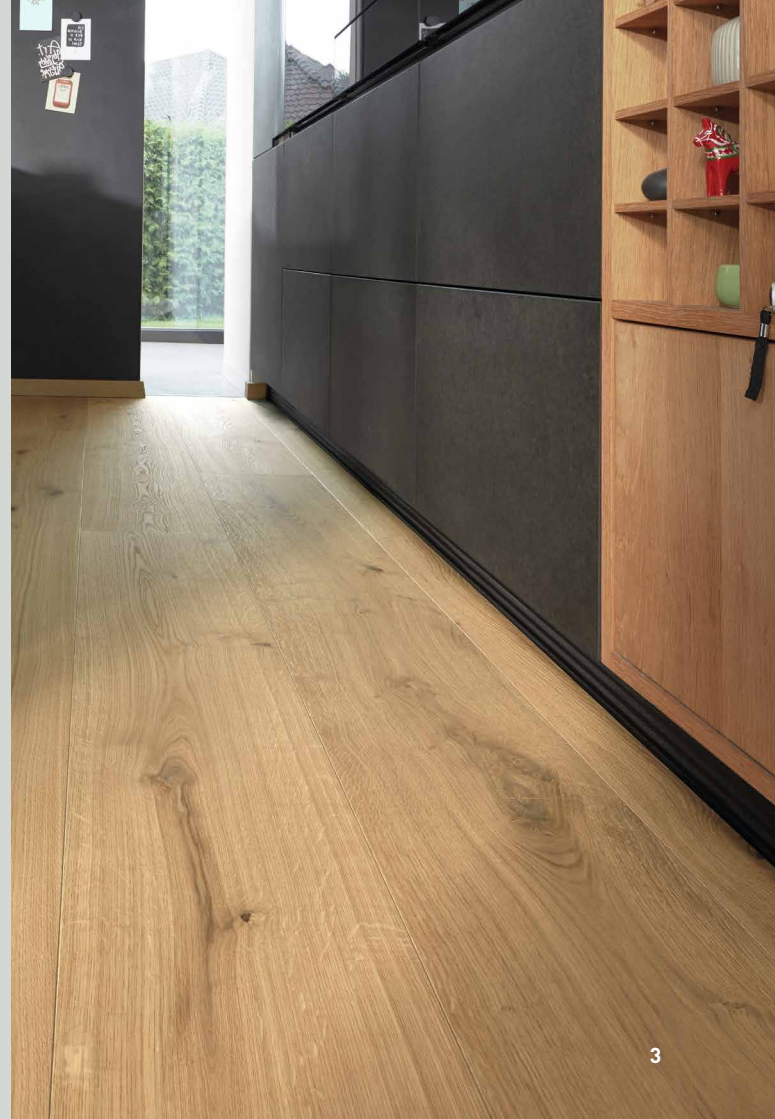
Microfibre cloths are very popular for household cleaning, but they are unsuitable for wood floors as they damage the finish.

## Protect it from drying out

A minimum of 40 percent humidity is ideal for wood flooring. Especially in winter, however, heated rooms can often be drier than this. Humidifiers will help to prevent the wood drying out.

## Avoid scratches

We recommend the use of felt pads underneath your furniture. These help to prevent scratch marks appearing on the wood from moving chairs and other furniture.



# Cleaning and care

Oiled wood flooring is extremely hard-wearing and easy to look after. You can remove superficial dirt easily by vacuuming and dry-mopping. **Then mop** the floor using water and Wood Floor Soap or Oil Refresher from PROFF Woodcare. Wet-mopping using these specialist products will ensure optimum care.

## Required accessories

### Multimop

With cotton fringe and comfort-grip handle



### Bucket

Red/blue with castors



### Wood Floor Soap

For routine cleaning and care of wood floors. Cleans the surface.



### Oil Refresher

For routine cleaning and care of wood floors. Refreshes the surface.



### Spot Remover Spray

Removes coffee, tea, grease and red wine stains, etc.



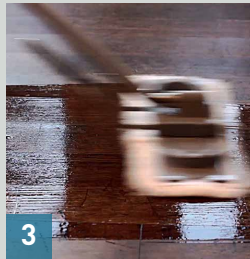
# Steps



1 Use a vacuum or cleaning cloths to clean the floor, removing dust and superficial dirt.



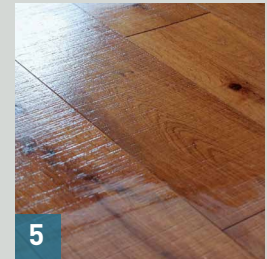
2 Mix the Wood Floor Soap or Oil Refresher with warm water. 100 ml concentrate to 4 litres of warm water.



3 Mop the floor (avoid pooling) using the cotton-fringed multimop pad.



4 For best results, rinse the mop in clean, warm water after every wipe to avoid spreading the absorbed dirt over the floor.



5 After cleaning and care, leave the floor to dry. Do not mop with clean water.

# Cleaning and care with the PULU Spray Mop

Oiled wood flooring is extremely hard-wearing and easy to look after. You can remove superficial dirt easily by vacuuming and dry-mopping. **Then mop** the floor using water and Wood Floor Soap or Oil Refresher from PROFF Woodcare. Wet-mopping using these specialist products will ensure optimum care.

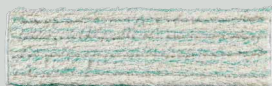
## Required accessories

### PULU Spray Mop

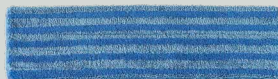
With 40 cm Velcro head, 600 ml pressurised bottles (blue and red)



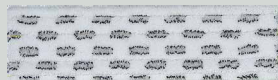
### Mop



Mop pad for oiled surfaces



Mop pad for vinyl and varnished surfaces



Tile mop for ceramic surfaces

### Wood Floor Soap

For routine cleaning and care of wood floors. Cleans the surface.



### Oil Refresher

For routine cleaning and care of wood floors. Refreshes the surface.



### Spot Remover Spray

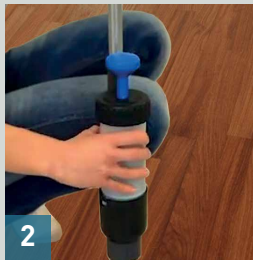
Removes coffee, tea, grease and red wine stains, etc.



# Steps



1 Use a vacuum or cleaning cloths to clean the floor, removing dust and superficial dirt.



2 Mix the Wood Floor Soap or Oil Refresher with warm water. 1 cap of concentrate for each full bottle.



3 Press SoftTouch button to activate the PULU Spray Mop spray.



4 Mop in direction of spray head.



5 After cleaning and care, leave the floor to dry. Do not mop with clean water.

# Cleaning and care frequency

Use the guide below to check, at a glance, how often you should clean and oil your wood floor. This will retain the original beauty and positive features of your floor for many years to come.

Note: this schedule is only intended as a guide. Actual cleaning requirements may vary depending on the environment.

	Cleaning and care
<b>Floors in low-traffic areas</b> Bedrooms	Every 6 weeks
<b>Floors in medium-traffic areas</b> Hallways, office, living room	Every 4 weeks
<b>Floors in high-traffic areas</b> Kitchen, entrance, public building	Every 2 weeks

Oil-soaked cloths carry a fire risk. As a precaution, cloths should be rinsed in water after use and sealed in an airtight container.





## Tested and certified

To ensure PROFF Woodcare products always meet the highest environmental standards, they undergo regular intensive testing. They are also certified by the following nationally and internationally accredited bodies.



### EN 71-3

The migration of metals (As, Hg, Se, Cr, Sb, Cd, Pb, Ba) from the sample was tested to EN 71 Part 3 1995. No migration of the specified metals above the detection limit (10–50 ppm) was detected. All products for the home are therefore suitable for children's toys.



### DIN 53 160

Testing was carried out in accordance with method B 82.10 from the official collection of test procedures according to Section 35 of the German Foods and Other Commodities Act (adoption of German standard DIN 53 160). According to the results of the tests, the test strips applied to the various wood coatings showed no discernible colouring. The wood coatings are therefore resistant to saliva and sweat.



### VOC-free

Volatile organic compounds (VOCs) are released into the air by certain solvent-based solids or liquids and can cause symptoms such as headaches in extreme situations. VOC-free products have been proven to be free from such substances.

### General importer

Holzplatten AG  
Weberrütistrasse 10  
8833 Samstagern  
T 044 7869060

# How to protect your floor

## Chairfixx for cantilever chairs

For all tubular frame chairs

For hard floors

Ø12–25 mm



## Footclick 2

For all chair and table legs made from wood or plastic

For hard floors

Ø12–25 mm



## Footfixx with floor

Insertable floor protector for hollow tubular chair legs

For hard floors

Small, medium, large

Ø10–34 mm



## Screw-in wood-floor protector

For all wooden chair and table legs

For hard floors

Ø28–34 mm



## Multifixx

Universal for all furniture types

For hard floors

50 x 26 mm/35 x 18 mm



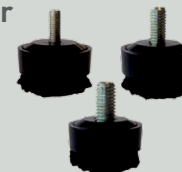
## Threadfixx screw-in floor protector

For all chairs with screw thread

For hard floors

Thread M6 x 14 mm/M8 x 15 mm/M10 x 16 mm

Ø35 mm





PROFF  
WOODCARE